

MERS

Operations Protocols for Hajj 2019

مركز القيادة و التحكم
Command & Control Center



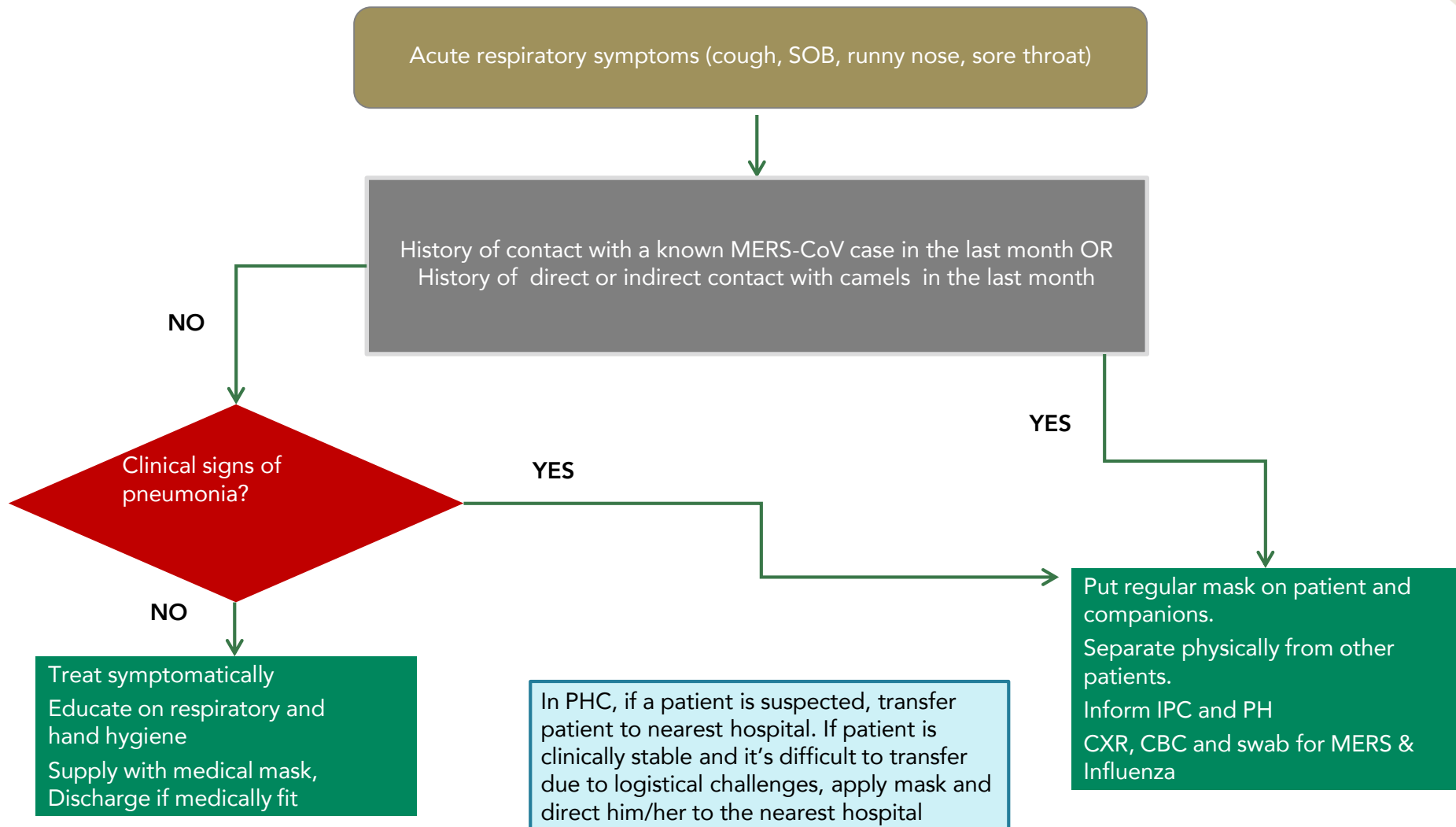


Contents

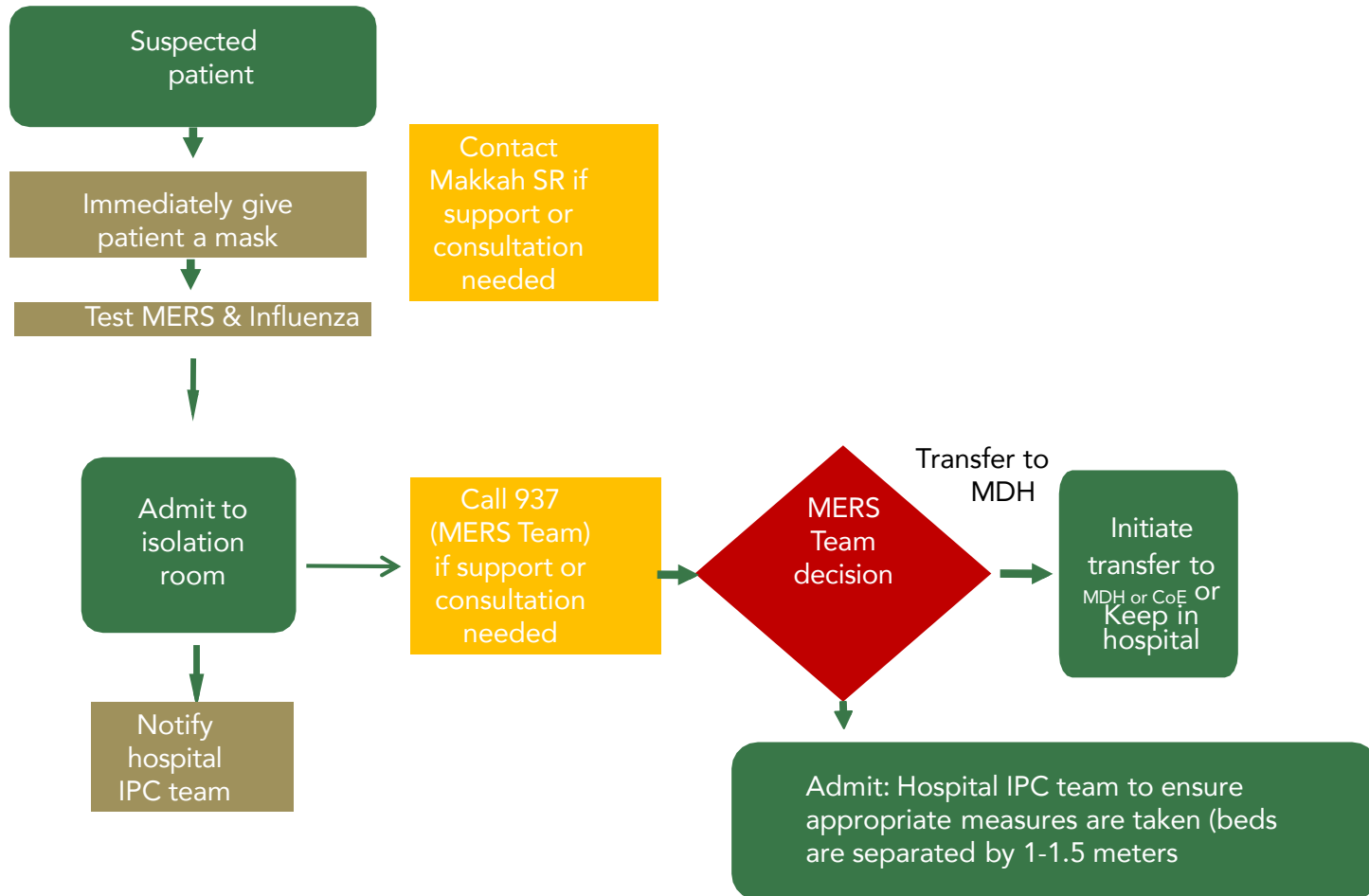
Transfer Protocols

ECMO Protocols

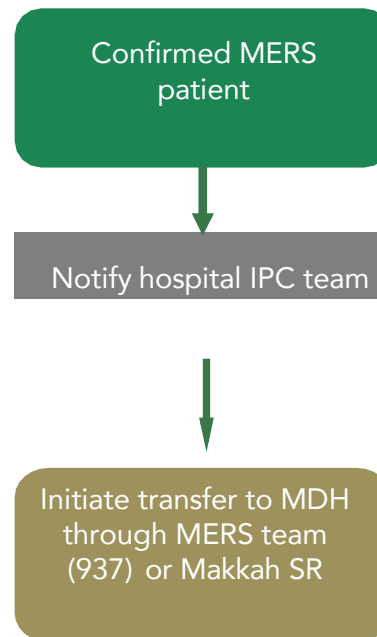
Identification of suspected MERS cases at a Healthcare in Makkah, Holy Sites, Madinah, and Jeddah



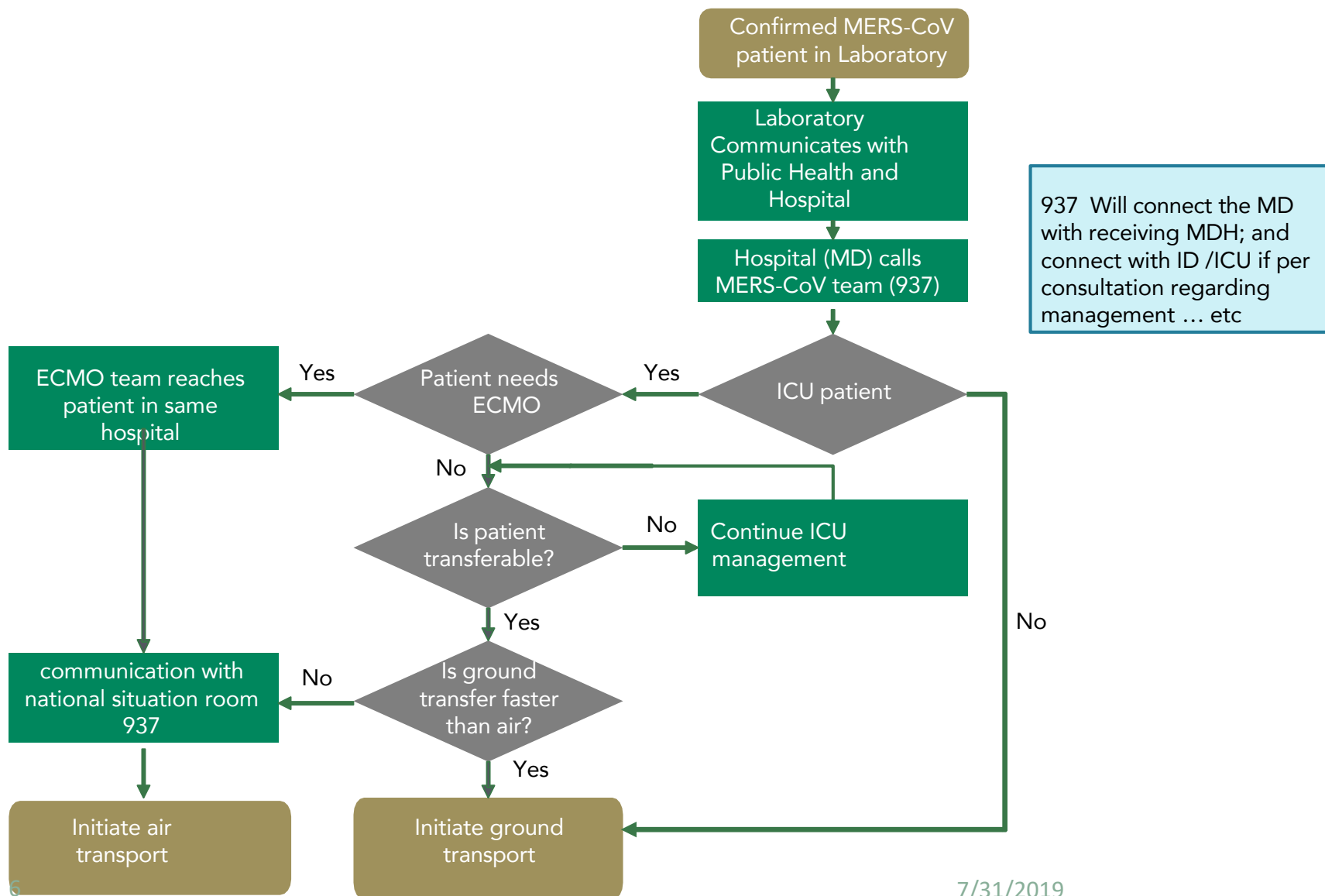
Diversion plan for a suspect MERS (ICU and non-ICU) patient in Makkah, Madinah or Jeddah Hospitals



Diversion plan for a confirmed MERS-CoV (ICU & non-ICU) patient in Makkah, Madinah, Holy Sites, or Jeddah Hospitals



Transfer protocol of a MERS case from a Hospital to an MDH



Designated hospitals to handle confirmed MERS cases In Makkah & Holy Sites

	Designated Hospitals Duration	Surge Plans
Makkah Local <i>Residents</i>	KAMC-Jeddah From the 15 th of Thul-Qaeda Till the end of Hajj season	A. If surge reach in KAMC-Jeddah transfer to East Jeddah B. If surge reach in East Jeddah transfer to King Feisal Hospital in Taif C. If ECMO need transfer to in KAMC-Jeddah though 937
Holy Sites <i>pilgrims</i>	East Arafat Hospital From the 8 th of Thul-Hijja to the 20 th of Hajj KAMC-Jeddah After 20 th of Thul-Qaeda to the end of Hajj season	A. If surge reach in East Arafat Hospital transfer to KAMC-Jeddah B. If surge reach in KAMC-Jeddah transfer to East Jeddah C. If surge reach in East Jeddah transfer to King Feisal Hospital in Taif D. If ECMO need transfer to in KAMC-Jeddah though 937

Designated hospitals to handle confirmed MERS cases In Madinah & Jeddah

	Designated Hospitals	Surge Plans
Madinah	Ohoud	a) If surge reached at Ohoud, transfer to King Faisal hospital Taif.
Jeddah	KAMC-Jeddah	a) If surge reached at KAMC-Jeddah, transfer Non-MERS patients to MOH governmental hospital and private hospitals, if needed. b) If KAMC-Jeddah is full, transfer to East Jeddah. c) If surge reached at East Jeddah, transfer to King Faisal hospital in Taif. If ECMO is needed transfer to PMAH-Riyadh/ Dammam Medical Complex through 937

Transfer protocol for ECMO

