



مركز القيادة و التحكم  
*Command & Control Center*

# Approach for managing suspected Ebola cases

V 5.0

# Ebola Diversion Plans

## Purpose of this document

- Establish and communicate clinical operations **protocols** that **must be followed** for **Ebola cases diversions** to appropriate facilities



# Disclaimer for use of this document

This document:

- Is **NOT intended as a comprehensive Ebola response guideline**
- Should be supplemented with **other important guidelines** such as infection prevention and control and isolation guidelines which are found **on the MOH website**:
  - **Ebola readiness guideline:**  
[http://www.moh.gov.sa/ layouts/FinalEVDIPCGuidelines08.08.2014.pdf](http://www.moh.gov.sa/layouts/FinalEVDIPCGuidelines08.08.2014.pdf)
- Is subject to **change** as guidelines are updated



# Acknowledgments

## This document was developed with

- Dr. Anees Sindi, Deputy Commander, Command and Control Center
- Dr. Wail Tashkandi, Clinical Operations Platform Leader, Command and Control Center
- Dr. Ahmad Wazzan, President, Saudi Arabian Society of Emergency Medicine
- Dr. Tariq Madani, Advisor to HE Minister of Health, Chairman of Scientific Advisory Board
- Dr. Tariq Al-Arnous, Control Tower Platform Leader, Command and Control Center

**For any comments, clarifications,  
or recommendations pertaining  
to this document please email  
Dr. Wail Tashkandi at  
[Watashkandi@moh.gov.sa](mailto:Watashkandi@moh.gov.sa)**



- **Guiding principles**
  - Case definitions
  - Ebola designated hospitals & teams definitions
  - Ebola diversion plans

# General guiding principles to follow in handling suspected Ebola cases (1 of 2)

The following principles were followed to create the referral pathways. They should be followed in case of doubt or when handling cases not specifically addressed in this guide:

## General

- All hospital staff should be aware of latest Ebola **case definition**<sup>1</sup> in addition to waste disposal in case of Ebola
- At all times, handle suspect patients with appropriate **protection equipment** (i.e. PPEs applied on patients and by health professionals) and follow all recommended IPC guidelines<sup>2</sup>
- When transferring patients to other locations, **transfer protocols**<sup>2</sup> should be followed

1 Case definitions available on MoH websites: Ebola: [http://www.moh.gov.sa/ layouts/FinalEVDIPCGuidelines08.08.2014.pdf](http://www.moh.gov.sa/layouts/FinalEVDIPCGuidelines08.08.2014.pdf)

2 Transfer protocols available in this document

# General guiding principles to follow in handling suspected Ebola cases (2 of 2)

## Suspected cases

- **Important: Whenever a suspect case of Ebola is identified, call the infectious diseases hotline (937) to report the case and receive up-to-date guidance**
- For Ebola suspect patients, call the infectious disease **hotline (937) to trigger Ebola team** to arrive to location and transfer the patient to the Ebola Designated Hospitals immediately

# Contents

- Guiding principles
- **Case definitions**
- Ebola designated hospitals & teams definitions
- Ebola diversion plans





# Ebola case definition

## Person Under Investigation (PUI)

- Illness in a person who has both consistent symptoms and risk factors as follows
  - Clinical criteria, which includes fever of greater than 38.6°C, and additional symptoms such as severe headache, muscle pain, vomiting, diarrhea, abdominal pain, or unexplained hemorrhage (gingival, nasal, cutaneous [petechiae, bruises, ecchymosis], gastrointestinal, rectal [gross or occult blood], urinary [gross or microscopic hematuria], vaginal, or puncture sites bleeding); AND
  - Epidemiologic risk factors within the past 3 weeks before the onset of symptoms, such as contact with blood or other body fluids of a patient known to have or suspected to have EVD; residence in-or travel to-an area where EVD transmission is active; or direct handling of dead or alive fruit bats, monkeys, chimpanzees, gorillas, forest antelope and porcupines from disease-endemic areas.

## Contacts of an EVD Case

- A suspected case with laboratory-confirmed diagnostic evidence of Ebola virus infection

SOURCE: KSA MoH Ebola Infection Prevention and Control Guidelines [http://www.moh.gov.sa/ layouts/FinalEVDIPCGuidelines08.08.2014.pdf](http://www.moh.gov.sa/layouts/FinalEVDIPCGuidelines08.08.2014.pdf)



# Contents

- Guiding principles
- Case definitions
- **Ebola designated hospitals & teams definitions**
- Ebola diversion plans



# Specific hospitals have been designated to handle suspected Ebola cases

## Ebola Designated Hospitals

### Western province

- King Fahad Hospital, Jeddah

### Central province

- Prince Mohammad bin Abdulaziz Hospital, Riyadh

### Eastern province

- Dammam medical complex, Dammam

## Dedicated teams, reachable through the 937 hotline, will be in place to assist in managing suspected Ebola cases

### Teams, reachable through the 937 hotline, who can help in diagnosing, handling, or transferring cases

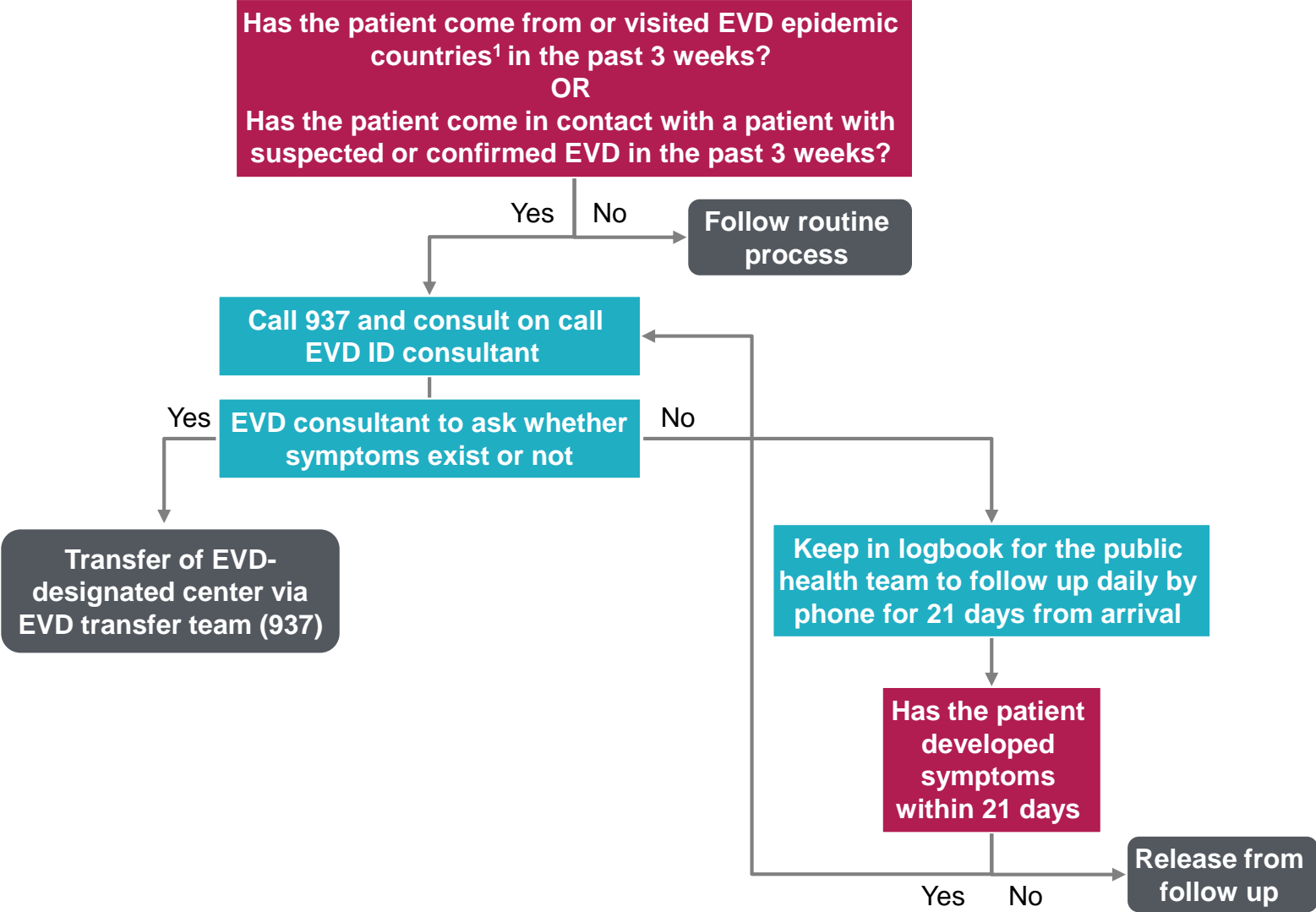
- **Ebola ID consultant:** On call infectious diseases consultant who can help in diagnosing cases over the phone and advising on course of action to take
- **Ebola transfer team:** Emergency team responsible for extracting and transferring suspected Ebola cases

# Contents

- Guiding principles
- Case definitions
- Ebola designated hospitals & teams definitions
- **Ebola diversion plans**

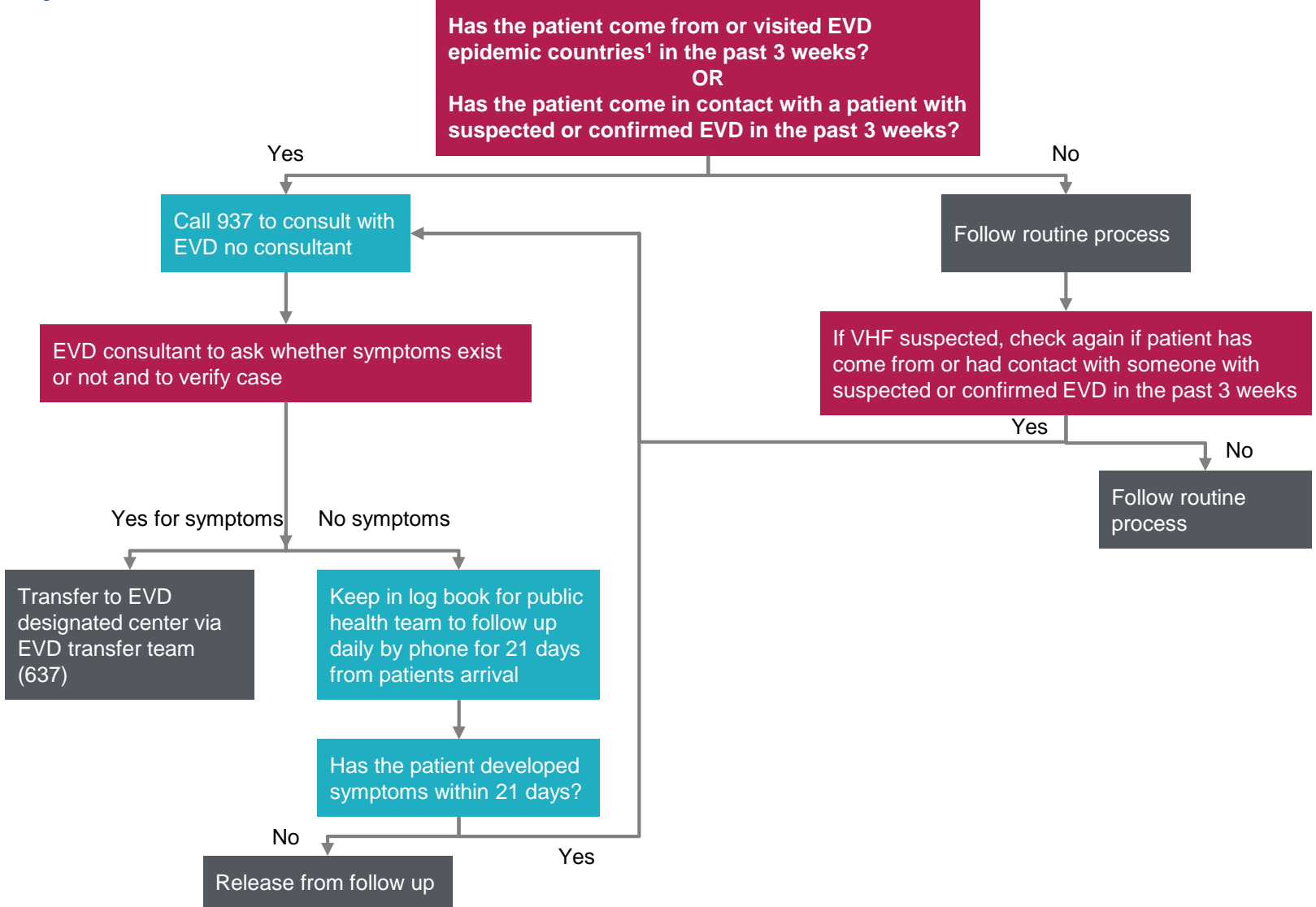


# Approach to suspected Ebola Viral Disease (EVD) cases at points of entry



<sup>1</sup> Liberia, Sierra Leone, and Guinea (please refer to latest list of countries as per WHO and/or MoH)

# Approach to suspected Ebola virus disease (EVD)<sup>1</sup> cases at hospitals or primary healthcare centers



<sup>1</sup> Liberia, Sierra Leone, and Guinea (please refer to latest list of countries as per WHO and/or MoH)

